

n e w w e n

Multi-use, traceable packaging solutions for your supply chain



100% circular

newwen.com



Multi-use and traceable packaging solutions

Multi-use packaging that is circular while retaining residual value and equipped with digital technology. Appropriate for all sectors.

IoT for internal and external processes

The Newwen packaging solutions feature a linked RFID, barcode and QR code label. The application of digital technology provides information on data such as location, temperature, humidity, contents, order information and quantities. Linking to your own ERP system provides greater insights and optimises internal and external logistics processes. Newwen offers tailor-made IoT applications for complete supply chain management.

Multiple use

The packaging solutions are made of the safe and high-strength plastic Polypropylene (PP5). This makes it ideal for multiple use. The products can be delivered both flat and in various folding constructions, saving storage and transport costs, CO2 and time. Let's work together on a sustainable economy!



Multi-use packaging that is circular while retaining residual value and equipped with digital technology

Newwen is introducing multi-use traceable packaging solutions to replace single-use packaging. The plastic material features a linked RFID, barcode and QR code tag for tracking and recording movements or locations. The material is fully reusable and retains residual value.

Newwen's products contribute to circular energy-neutral logistics and make your internal and external processes more transparent and efficient

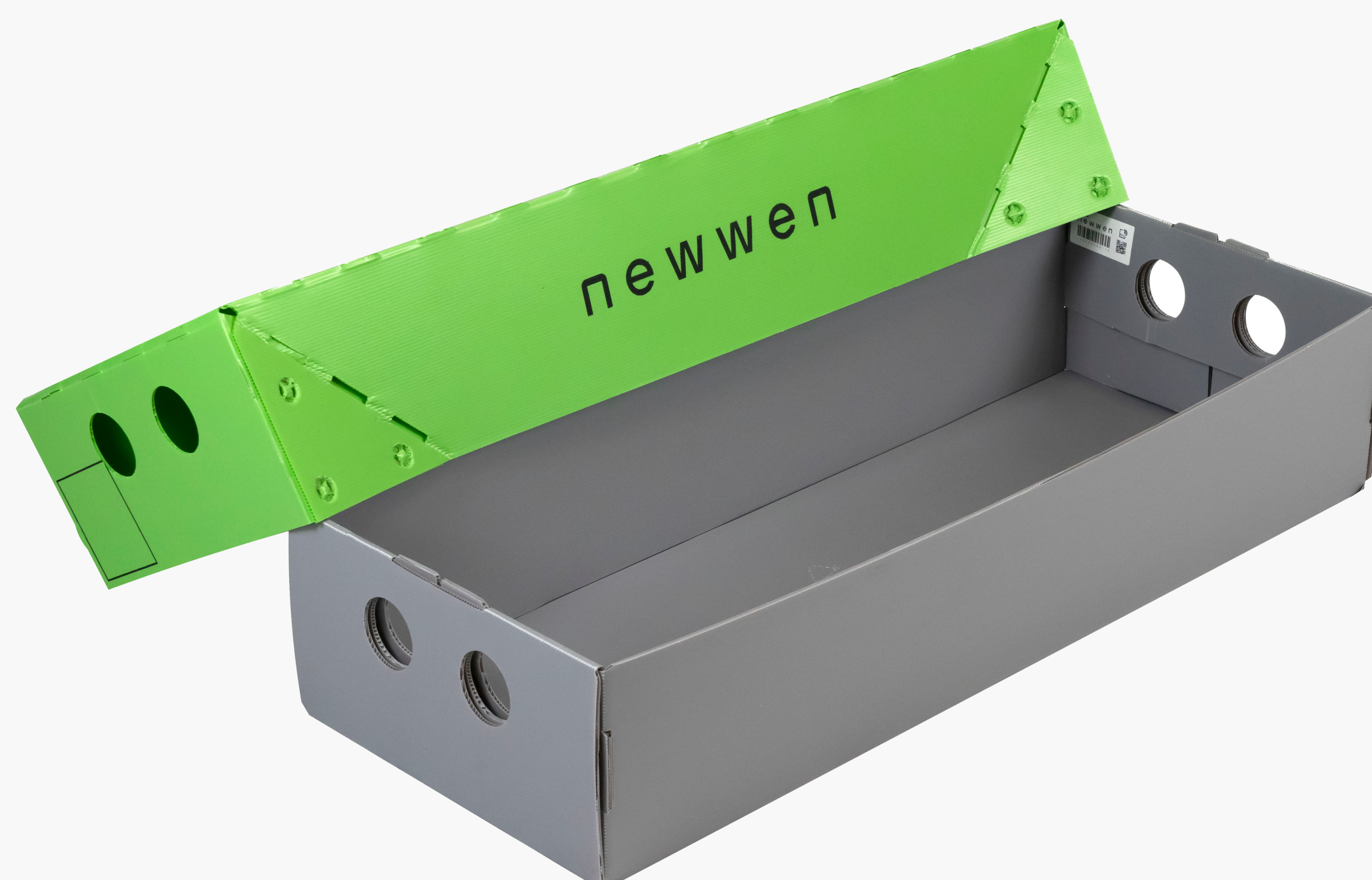


**All businesses 100% circular
and fully energy neutral
by 2050.**

We'll do it together!

✦ The solution for circular energy-neutral logistics.

- ✓ Full-colour printing
- ✓ Customisation options
- ✓ IoT: digitale technologie voor optimaal supply chain management
- ✓ Multi-use is more cost-effective than one-off
- ✓ Suitable for automated handling and mechanisation
- ✓ Can be made flat or foldable, saves storage and transport costs, CO2 and time
- ✓ Free scanning and logging app to link data to your own ERP system
- ✓ Footprint proof
- ✓ Damp-proof
- ✓ Antibacterial
- ✓ Antistatic
- ✓ Residual value
- ✓ 100% recyclable



n e w w e n



Let's newwen smarter, intelligent and sustainable supply chains

for a cleaner, future-ready society



newwen.com